

DURAPES

Description

- Extra life time and flow rate than general PES membrane
- Microporous asymmetric polyethersulfone membrane cartridges
- Suitable for pre-filtering and post-filtering of drinks, foods, DI Water, semiconductor, LCD industry, pharmaceutical process with excellent performance of a high filtration area, high flux, and low-pressure drop.
- Wide range of pore size from 0.2 to 0.6 μm .
- Morphology
Double skin on an open anisotropic pore structure.

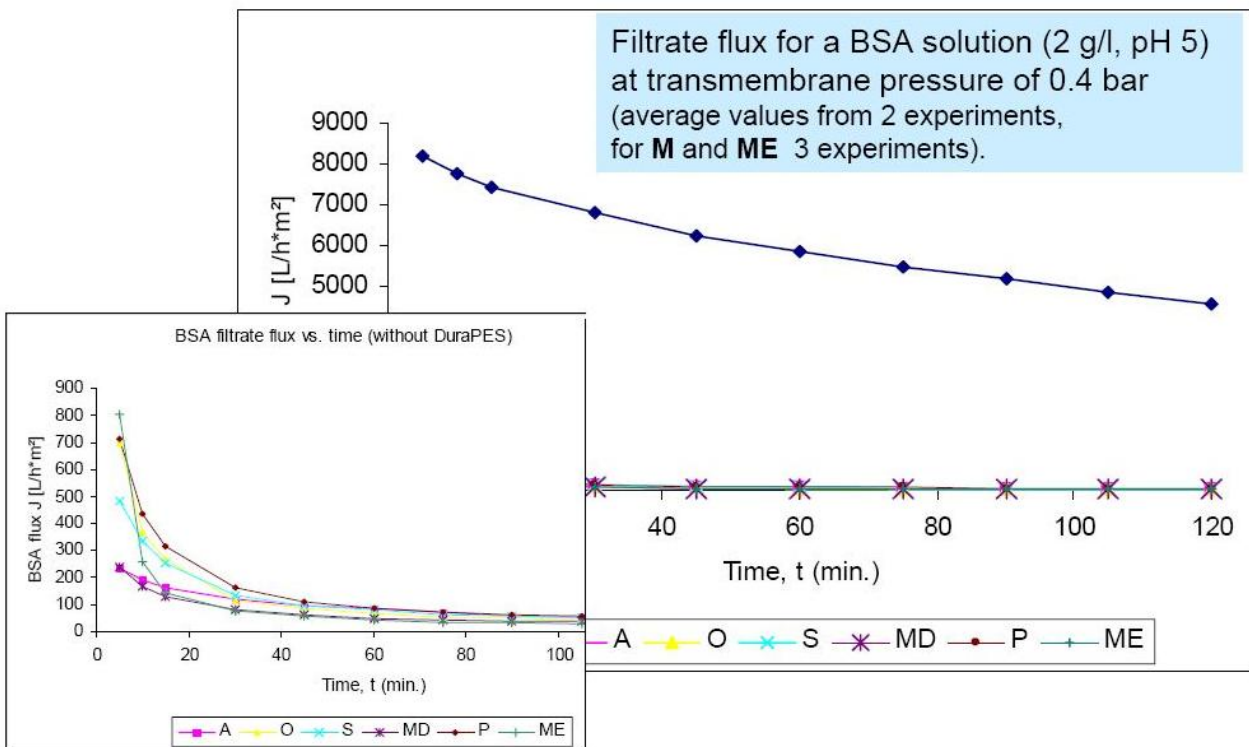


Feature

- High flow rates and Consistent filtration performance through controlled pore size
- Inherently hydrophilic

- Evaluation reference

Test with protein filtration



→ DuraPES with superior performance (up to 100 times higher throughput!)

Specifications

Materials

- Medium : Hydrophilic PES Membrane
- Parts(Core, Cage,Endcaps) : Polypropylene, High density polyethylene
- Support and Drainage : Polypropylene
- Seal(O-ring) : EPDM, Silicone,Viton, PTFE encapsulated

Structure

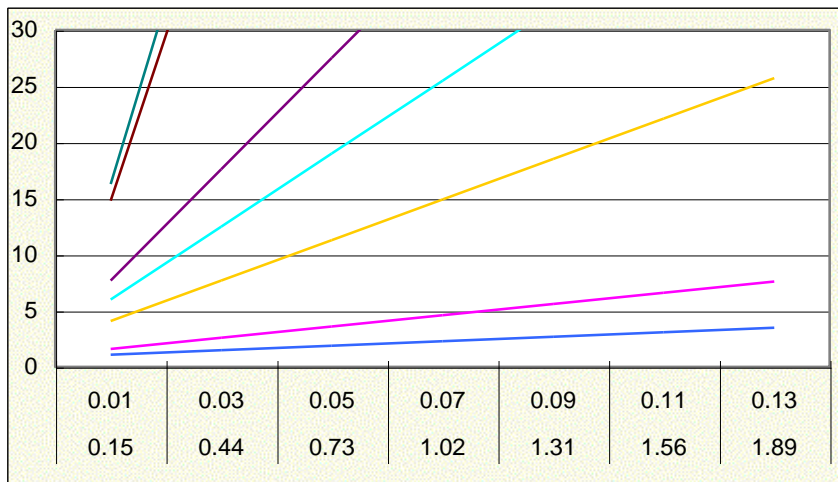
- Nominal O.D : 68mm (4.42inch)
- Nominal I.D : 30mm (2.15inch)
- Nominal length : 250mm, 500mm, 750mm, 1000mm (Possible real inch)
- Effective filtration area for 10inch cartridge : 0.63m²

Operating conditions

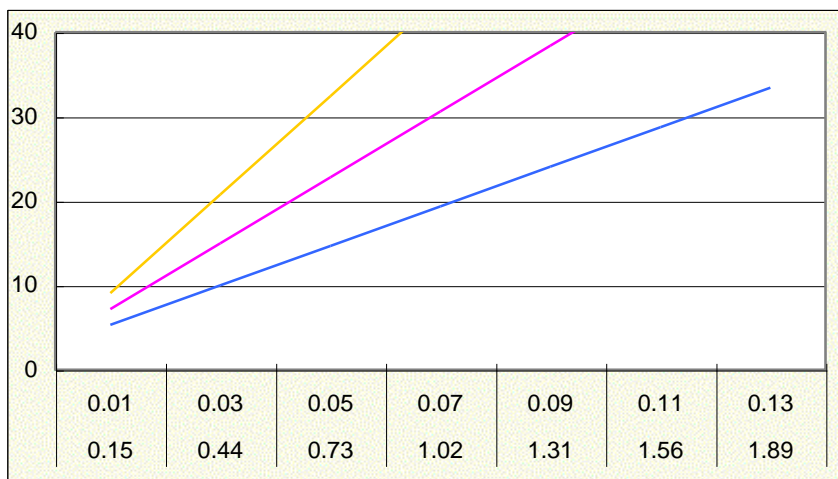
- Max. operating temperature : 80°C at 60psi(4.1bar)
- Max. differential pressure : 60psi(4.1bar) at 25°C
- Sterilization –Insitusteam or autoclave to 120°C (30minute cycles) for a max. accumulated exposure of 10hours at Max. differential pressure 7psi(0.5bar). Alternatively, PORPES may be sanitized with compatible chemical agent.

Flow rate of 10inch cartridge

PES



DURAPES



Part Number Identification

CSP- □□□□ - □□ - □

①②③④

⑤⑥

⑦

①	②	③	④	⑤	⑥	⑦
End Style	Material of Medium	Material of Parts	Material of Seal	Length	Grade	Micron Rating
1:DOE 2:226/FLAT 3:222/FLAT (E:222/FLAT) 7:226/FIN 8:222/FIN	D:DURA PES	1:PP(85℃) 2:Reinforced PP(105℃) 3:HDPE(130℃)	S:Silicone E:EPR V:VITON F:FEP Encapsulated	1:250mm 2:500mm 3:750mm 4:1,000mm	D:long life time grade	0.2 0.45 0.6