

Description

- Large filtration area by pleated media which combined with depth and surface filtration
- All polypropylene multi-layer media.
- Broad range chemical compatibility
- From absolute to nominal rating
- Superior High flow rates , high dirt-holding capacity
- Manufactured in a clean room (10,000 Class)
- Lowest extractable and stable structure by thermally bonded components
- ISO9001 & ISO14001



Product Features

- Super ranged flow rates and throughputs
- All materials are FDA listed
- It have been received one of the highest reputation on electronics and food market
- Accumulated experience with major industrial customers application

Applications

- RO/DI filtration, General Water Filtration, Serum and Biologicals, Solvent
- Beverage/Wine Clarification, Recirculating Liquids, Reagent Grade Chemicals
- Pharmaceutical industry, Biological industry, Electronic industry
- Food and Beverage industry

Specifications

Materials

- Medium : Pleated graded-density melt-blown polypropylene or Borosilicate microfiber glass with acrylic (support layer : spun bonded polyester)
- Core, cage and end caps : Polypropylene, Reinforced P.P by Talc, High Density Polyethylene
- Support and drainage : Polypropylene •Sealing : Thermal bonding
- O-ring options : Viton, Silicon, EPR & Teflon encapsulated type(BSI Registered)

Structure

- | | |
|--|----------------------------|
| • Effective Filtration area : | •Dimension |
| 0.1 μm : 0.45m ² (D) 0.2 μm : 0.45m ² (S) | Length : 125mm,250mm,500mm |
| 0.45 μm : 0.50m ² (D) 0.6 μm : 0.50m ² (S) | 750mm,1000mm |
| 1.0 μm : 0.50m ² (D) 10.0 μm : 0.60m ² (S) | Inner Diameter : 33mm |
| 20.0 μm : 0.60m ² (D) 40.0 μm : 0.60m ² (S) | Outer Diameter : 68mm |
- ※S - Single layer, D - Double layer, T - Triple layer

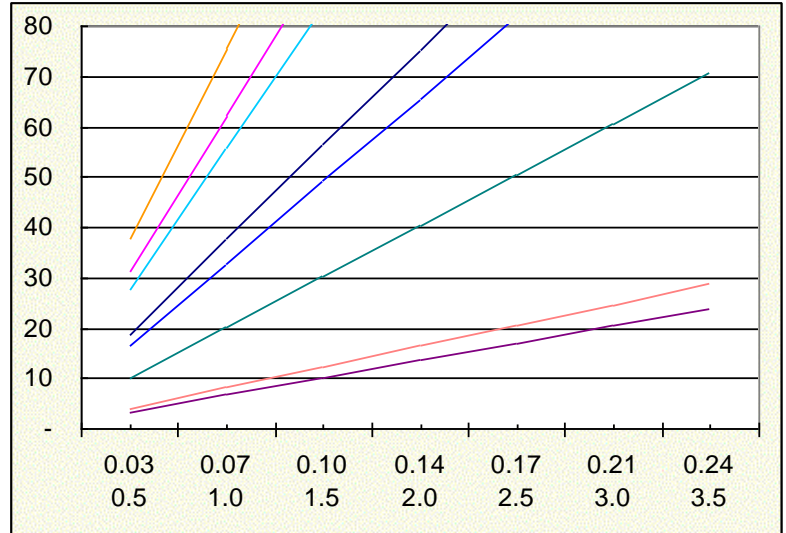
Operating conditions :

- Maximum operating temperature : 90°C
- Maximum forward differential pressure : 3.5bar at 90°C, 5.5bar at 50°C

Liquid Particle Retention ratings

Micron Rating	$\beta=10$ 90.0%	$\beta=1,000$ 99.0%	$\beta=5,000$ Absolute
Absolute 0.6	0.24	0.60	0.63
Absolute 0.8	0.36	0.81	0.80
Nominal 0.1	0.62	0.86	0.98
Nominal 0.2	1.40	1.73	2.00
Nominal 0.45	2.86	3.55	4.02
Nominal 0.6	4.39	5.78	6.21
Nominal 1	6.3	9.1	10.2
Nominal 10	12.5	16.3	20.5
Nominal 20	17.2	20.8	25.7
Nominal 40	20.1	29.2	35.5

Water flow rate of 10inch cartridge



*The removal efficiency is obtained using specified testing standard dusts.

Part Number Identification

CSP - □□□□ - □□ - □□□□
 ①②③④ ⑤⑥ ⑦

①	②	③	④	⑤	⑥	⑦
End style	Material of Medium	Material of Parts	Seal materials	Length	Grade	Micron Rating
1: DOE 2: 226/FLAT 3: 222/FLAT 7: 226/FIN 8: 222/FIN Z: CAPSULE (Multi-Cartridge)	P: P.P	1: P.P(85°C) 2: Reinforced P.P(105°C) 3: High Density PE(130°C)	S: SILICONE E: EPR V: VITON F: FEP Encapsulated	1 : 250mm 2 : 500mm 3 : 750mm 4 : 1000mm 5 : 62.5mm 6 : 125mm	A: Absolute Rating N: Nominal Rating	A0.6 A0.8 0.1 0.2 0.45 0.6 1 10 20 40