

PREFLOW I

Description

- Traditional depth Wound filter
- Migration protection design to filtrate
- Perfect dimension stability under high pressure by elaborate core design
- Stable pore size from diamond pattern by unique computer simulation program
- Non-foaming media, FDA media available
- Broad range chemical compatibility by wide range of media and cores
- Long service life, high dirt-holding capacity with consistent excellent filtration performance
- ISO9001 & ISO14001 certified
- Japan Food Sanitation Association certificate achieved



Applications

- Chemical industry
- Food and Beverage industry
- General Process water industry
- Petrochemical industry

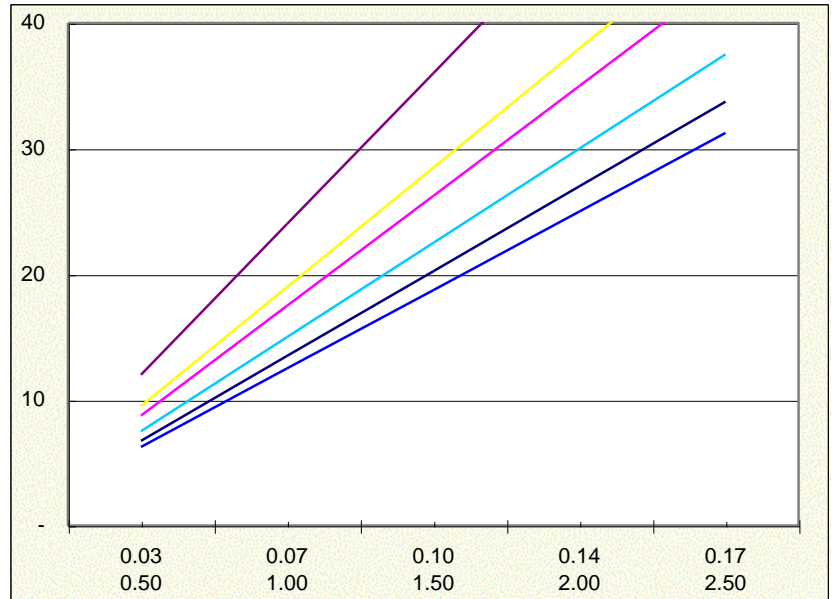
Specifications

Dimension	Length(mm)	250, 254, 500, 508, 750, 762, 1000, 1010
	Inner diameter(mm)	28, 30(for 40 inch)
	Outer diameter(mm)	62
Material	Media(Yarn)	Polypropylene & FDA P.P/ Cotton & FDA Cotton / Glass
	Core	Polypropylene & Reinforced P.P by Talc 304 STS, 316STS
	Core cover	Spun bonded Polypropylene & Polyester
	End CAP	Foamed Polyethylene
Operating Conditions	MAX dp(Kgf/cm ²)	4.5
	Max.temp(°C)	Up to media & core material

Liquid Particle Retention ratings

Micron rating	$\beta=10$ 90.0%	$\beta=100$ 99.0%	$\beta=1,000$ 99.9%
0.5	1	3	5
1	2	6	10
3	4	9	12
5	5	10	15
10	7	12	17
25	9	16	27
50	10	20	50
75	20	35	80
100	25	65	105
125	30	75	125

Water flow rate of 10inch cartridge



*The removal efficiency is obtained using specified testing standard dusts. polypropylene.

Part Number Identification

CSW - □□□□ - □□ - □□□
 ①②③④ ⑤⑥ ⑦

①	②	③	④	⑤	⑥	⑦
End style	Media	Materials of Core	Seal material	Length of filter	Inner / Outer diameter	Micron Rating
B:Standard (Double open)	1:Regular P.P	1:Regular P.P(85°C)	S:Silicone E:EPR V:Viton F:FEP Encapsulated P:Foamed P.E Z: Not option	1: 250mm	1: ID - 30mm OD - 62mm	0.5
G:Double gasket	2:Cleand P.P	2:Reinforced P.P(100°C)		2: 500mm	2: ID - 20mm OD - 45mm	3
S:Double gasket	3:Cotton	3:SUS304		3: 750mm	3: ID - 28mm OD - 62mm	5
Out tube	4:Cleand Cotton	4:SUS316		4: 1000mm	4: ID - 30mm OD - 70mm	10
2: 226/Flat	5:Glass	5:STEEL		5: 254mm	5: ID - 28mm OD - 85mm	25
3: 222/Flat	6:Polyester	6:Tin plate		6: 508mm		50
7: 226/Fin	7:Acryl	7:High density P.E		7: 762mm		75
8: 222/Fin				8: 1010mm		100
						125