

PREFLOW II

Description

- Traditional depth type thermal bonded Polypropylene non-woven filter
- No migration protection by thermally bonded matrix
- Graded density from outer layers to inner layers provides the ideal depth filtration.
- Thermally bonded matrix provides no pore opening and optimum particle retention under high pressure.
- Broad range chemical compatibility
- Non-foaming media
- Long service life, high dirt-holding capacity with consistent excellent filtration performance
- Withstand high differential pressure using core
- ISO9001 & ISO14001



Applications

- Suitable for water prefiltration
- Rre-filtration for RO, UF, pure water, safety filter for ion-exchanging machine
- Chemical industry
- Food and Beverage industry

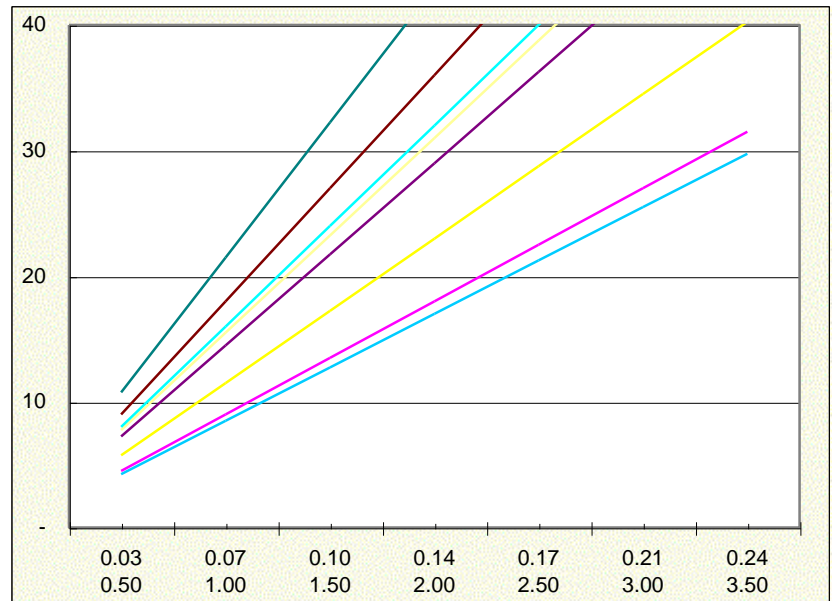
Specifications

Dimension	Length(mm)	250, 254, 500, 508, 750, 762, 1000, 1010
	Inner diameter(mm)	28/30
	Outer diameter(mm)	62
Material	Media	spun Polypropylene
	Core	Polypropylene / Reinforced P.P by Talc
	Out tube & End parts	Polypropylene & Reinforced P.P
	End CAP	Foamed P.E flat
	O-ring	EPR / Silicone / Viton /FEP Encapsulated
Operating Conditions	MAX temp(°C)	70/90
	MAX dP(Kgf/cm ²)	4(30°C)/ 2(60°C)

Liquid Particle Retention ratings

Micron rating	$\beta=10$ 90.0%	$\beta=100$ 99.0%	$\beta=1000$ 99.9%
0.5	5	6	7
1	9	10	11
3	10	11	13
5	11	13	15
10	12	15	17
25	15	25	29
50	18	30	50
75	20	40	75
100	25	50	95

Water flow rate of 10inch cartridge



*The removal efficiency is obtained using specified testing standard dusts.

Part Number Identification

CSN - □□□□ - □□ - □□□
 ①②③④ ⑤⑥ ⑦

①	②	③	④	⑤	⑥	⑦
End style	Media	Materials of Core	Seal material	Length of filter	Inner / Outer diameter	Micron Rating
G:Double gasket Double open)	1:Poly propylene	1:Regular P.P(85°C) 2:Reinforced P.P(100°C)	S:Silicone E:EPR V:Viton F:FEP Encapsulated P:Foamed P.E	1: 250mm	1: ID - 30mm OD - 62mm	05
S:Double gasket, Out tube				2: 500mm	2: ID - 20mm OD - 45mm	1 3
2: 226/Flat				3: 750mm	3: ID - 28mm OD - 62mm	5 10
3: 222/Flat				4: 1000mm	4: ID - 30mm OD - 70mm	25 50
7: 226/Fin				5: 254mm	5: ID - 28mm OD - 85mm	75 100
8: 222/Fin				6: 508mm		
				7: 762mm		
				8: 1010mm		