

PREFLOW5

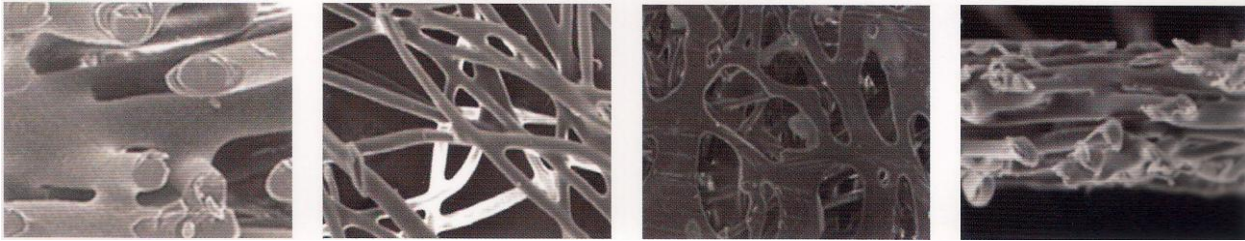
Description

- 100% PP/PE conjugated fiber to create 3-dimensional strong structure
- Mold layer with PP net, no core
- Long life depth gradient filtration
- High flow rate and low differential pressure



Product Features

- High purity and withstand high differential pressure



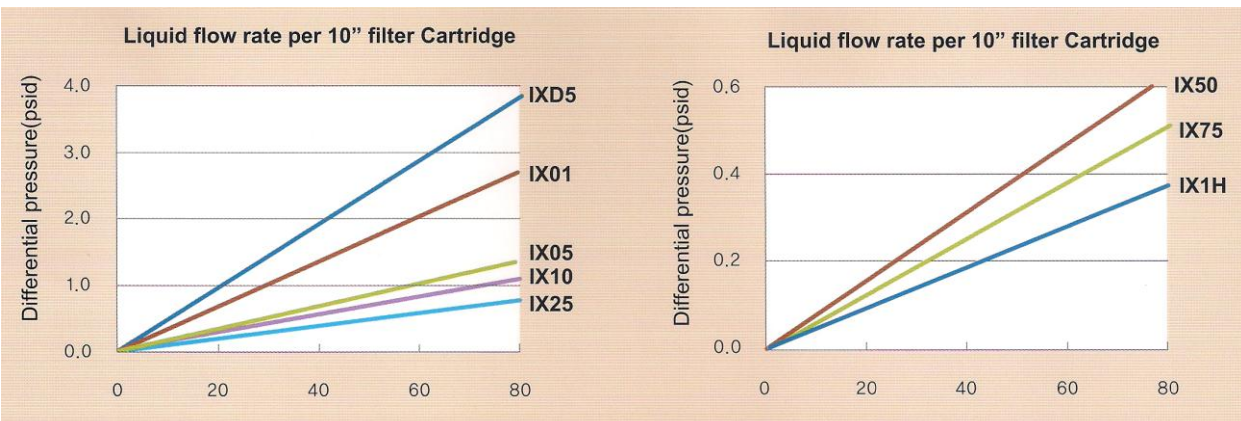
Applications

- High viscosity liquid
- Drink and Beverage industry
- Solvent, ink, paint, resins

Specifications

Dimension	Length(mm)	250, 500,750,1000
	Inner diameter(mm)	30
	Outer diameter(mm)	62/65
Material	Media	polypropylene polyethylene bicomponent fiber
	Core	no
Operating Conditions	MAX temp(°C)	80
	MAX dP(Kgf/cm2)	3(30°C)/ 2(60°C)

Water flow rate of 10inch cartridge



Part Number Identification

CSC - □□□□ - □□ - □□□

① ② ③ ④

⑤ ⑥

⑦

①	②	③	④	⑤	⑥	⑦
End style	Media	Materials of Core	Seal I	Length of filter	Inner / Outer diameter	Micron Rating
G: (Double open) 2: 226/Flat 3: 222/Flat 7: 226/Fin 8: 222/Fin	1: PP/PE bicomponent fiber	1: NONE	1: NONE	1: 250mm 2: 500mm 3: 750mm 4: 1000mm	1: ID - 30mm OD - 62mm 2: ID - 30mm OD - 65mm	0.5 1 5 10 25 50 75 100