

PORTEF

Description

- Polytetrafluoroethylene membrane encased and supported by all polypropylene
- The unique properties of expanded PTFE support a broad range of liquid and air filtration
- Combines chemical and thermal resistance of PTFE with a microstructure of billions of interconnected continuous fibrils.



Features

- Excellent retention of very small particles
- Bacteria retention (in specific pore sizes)
- Remove particles and micro-organisms greater than 0.2 μ m from gases and liquids
- High flow rate
- A clean, non-shedding surface broadest range of pore sizes available
- Available in a wide range of absolute pore size
- All components are thermally bonded without adhesives
- Unique pre-filter layer
- Low extractable
- Inherently hydrophobic
- 100percent integrity tested
- All materials are FDA listed for contact with food and beverages.
- Manufactured in a clean room (100 and 10,000 Class)
- ISO9001 & ISO14001
- Highest reputation on electronics and food market
- Abundant experience with major customers application

Applications

- Portef PTFE Applications in Ultra High Purity Gas and Liquid Micro filtration
- Concentrated acids and bases • Rinses and solvents
- RO/DI filtration • Etchants • Photo resists • Bulk chemicals
- Sterile tank venting • Fermentation air applications • Sterile process for gases

Specifications

Materials

- Medium : PTFE
- Core, cage and end caps : Polypropylene, High Density Polyethylene
- Support and drainage : Polypropylene
- O-ring options : Viton, Silicon, EPR & Teflon encapsulated type(BSI Registered)

Structure

• Filter area :

0.1 μ m : 12.1 sq. ft
 0.2 μ m : 10.8 sq. ft
 0.45 μ m : 8.75 sq. ft
 0.6 μ m : 7.4 sq. ft
 1.0 μ m : 7.4 sq. ft

• Dimension

Length : 125mm, 250mm, 500mm,
 750mm, 1000mm
 Inner Diameter : 33mm / Outer Diameter : 68mm

Operating conditions

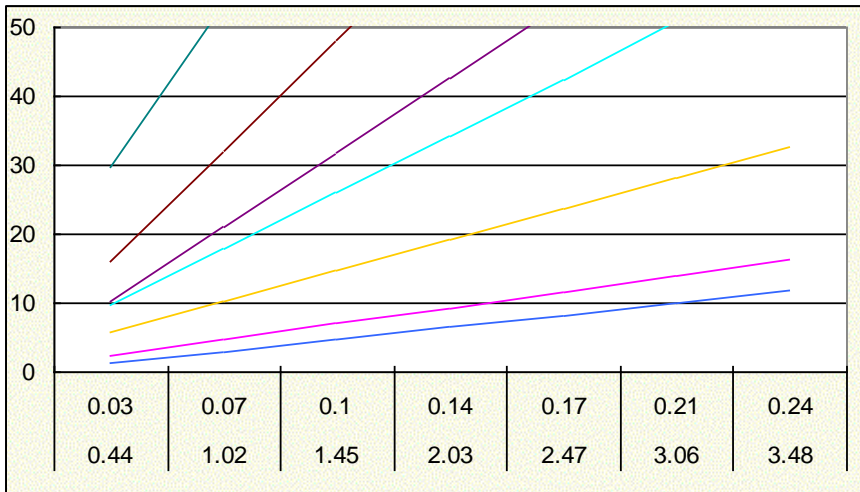
- Maximum operating temperature : 90°C
- Maximum forward differential pressure 3.5bar at 90°C / 5.5bar at 50°C

IPA Bubble Point

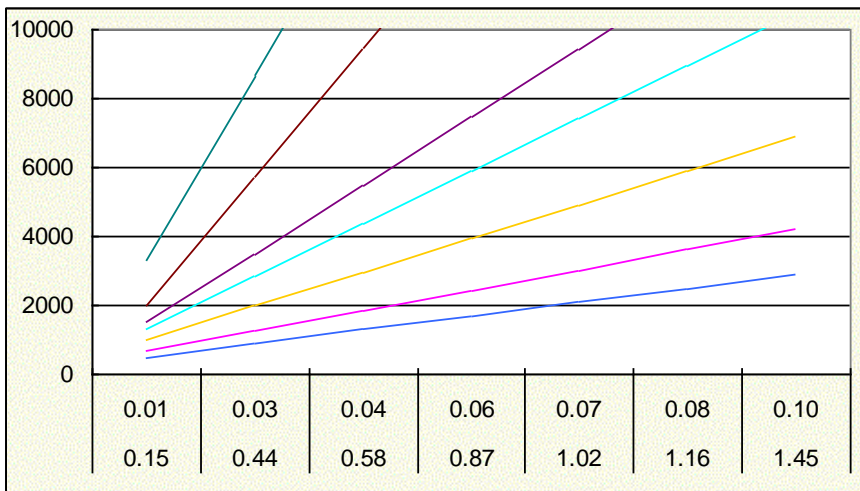
unit : psi

MICRON RATING	0.1 μ m	0.2 μ m	0.45 μ m	0.6 μ m	1.0 μ m
Bubble Point (@10.0ml/min, 47mm Φ sample)	44	32	19	18	7

IPA flow rate of 10inch cartridge



Air flow rate of 10inch cartridge



Part Number Identification

CSP- □□□□ - □□ - □□□□
 ①②③④ ⑤⑥ ⑦

①	②	③	④	⑤	⑥	⑦
End style	Material of Medium	Material of Parts	Seal materials	Length	Grade	Micron Rating
1: DOE 2: 226/FLAT 3: 222/FLAT 7: 226/FIN 8: 222/FIN Z: CAPSULE (Multi- Cartridge)	T: PTFE	1: P.P(85℃) 2: Reinforced P.P(105℃) 3: High Density PE(130℃)	S: SILICONE E: EPR V: VITON F: FEP Encapsulated	1: 250mm 2: 500mm 3: 750mm 4:1000mm 5: 62.5mm 6: 125mm	A:Hydrophilic W:Hydrophobic	0.1 0.2 0.45 0.6 1.0 3.0 5.0 10.0